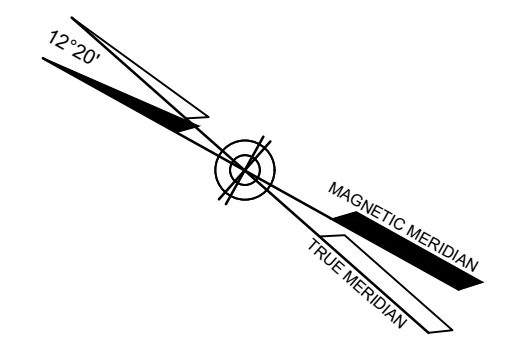
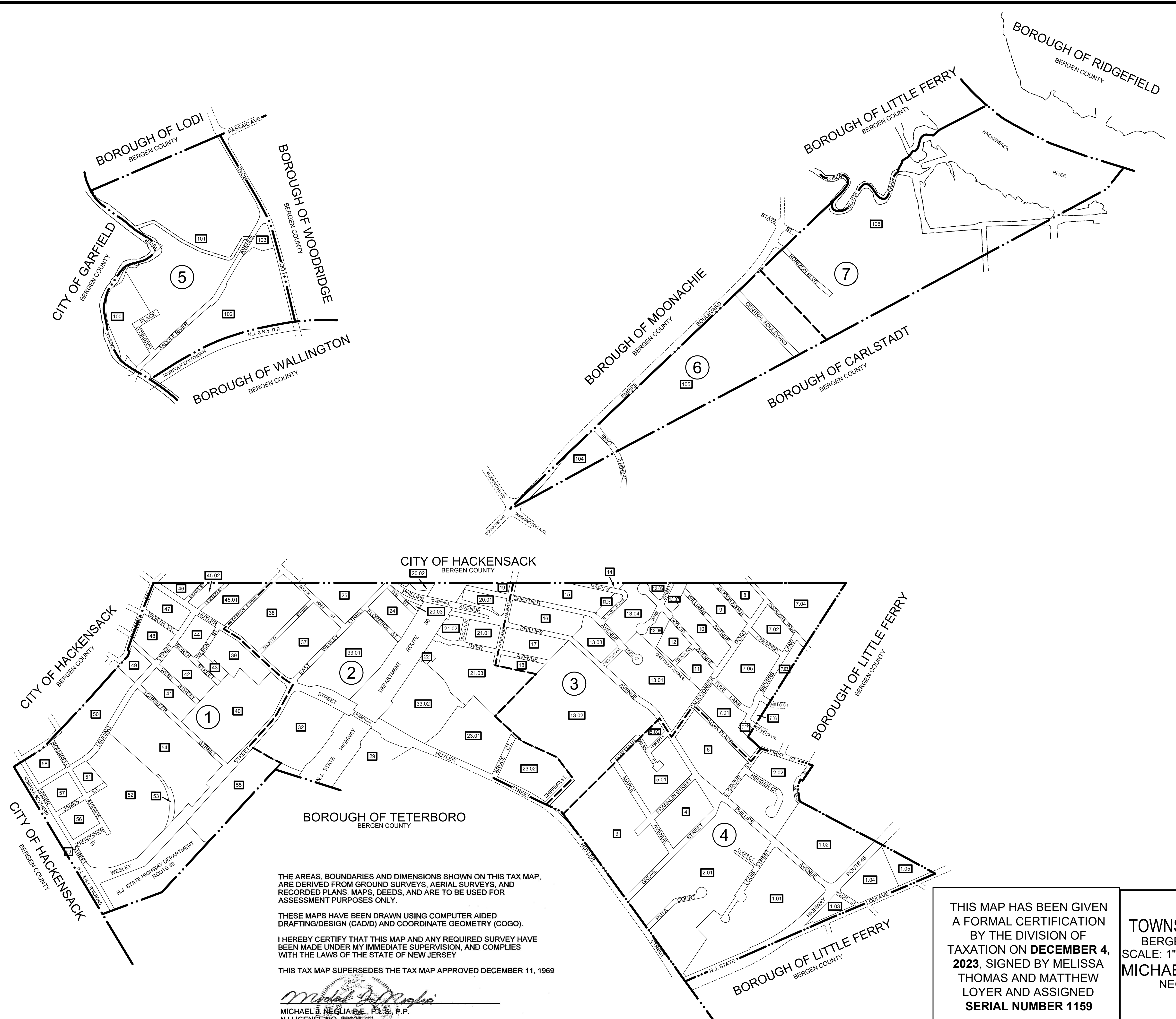


REVISIONS		
DATE	L. S. NAME	LIC. NO.



N.J.P.C.S.



LEGEND

KEY SHEET

- 20 SHEET NUMBER
- 15001 BLOCK NUMBER
- BLOCK LIMIT
- - - SHEET LIMIT LINE
- · - · - COUNTY BOUNDARY
- · - · - MUNICIPAL BOUNDARY

DETAIL SHEETS

- 15001 BLOCK NUMBER
- 10 LOT NUMBER

THE AREAS, BOUNDARIES AND DIMENSIONS SHOWN ON THIS TAX MAP, ARE DERIVED FROM GROUND SURVEYS, AERIAL SURVEYS, AND RECORDED PLANS, MAPS, DEEDS, AND ARE TO BE USED FOR ASSESSMENT PURPOSES ONLY.

THESE MAPS HAVE BEEN DRAWN USING COMPUTER AIDED DRAFTING/DESIGN (CAD/D) AND COORDINATE GEOMETRY (COGO).

I HEREBY CERTIFY THAT THIS MAP AND ANY REQUIRED SURVEY HAVE BEEN MADE UNDER MY IMMEDIATE SUPERVISION, AND COMPLIES WITH THE LAWS OF THE STATE OF NEW JERSEY

THIS TAX MAP SUPERSEDES THE TAX MAP APPROVED DECEMBER 11, 1969

Michael J. Neglia
 MICHAEL J. NEGLIA, P.E., P.L.S., P.P.
 NJ LICENSE NO. 88604

THIS MAP HAS BEEN GIVEN A FORMAL CERTIFICATION BY THE DIVISION OF TAXATION ON **DECEMBER 4, 2023**, SIGNED BY MELISSA THOMAS AND MATTHEW LOYER AND ASSIGNED **SERIAL NUMBER 1159**

TAX MAP
 TOWNSHIP OF SOUTH HACKENSACK
 BERGEN COUNTY, NEW JERSEY
 SCALE: 1"=400' 08/24/2023
 MICHAEL J. NEGLIA, P.E., P.L.S., P.P.
 NEGLIA ENGINEERING ASSOCIATES
 34 PARK AVENUE
 LYNDDURST, NEW JERSEY
 TO SHOW CONDITIONS AS OF 02/27/2023

REVISIONS		
DATE	L. S. NAME	LIC. NO.

Township Street by Sheet

Street Name	Sheet Number(s)
Agar Place	3,4
Bruce Court	2
Calicooneck Road	3,4
Central Boulevard	6
Chestnut Avenue	3
Chippewa Street	2,3
Christopher Street	1
Dinallo Street	2
Division Street	1
Dyer Avenue	2
E Grove Street	3,4
East Wesley Street	2
Empire Boulevard	6,7
First Street	4
Florence Street	2
Fourth Avenue	3
Franklin Street	4
Garfield Place	5
Green Street	1
Grove Street	4
Henger Court	4
Hoffman Street	1,2
Horizon Boulevard	7
Huyler Street	1,2,3,4

Street Name	Sheet Number(s)
Ise Street	2
Jackson Avenue	3
James Street	1
John Street	3
Kinzley Street	4
Leuning Street	1
Lincoln Street	2
Lodi Avenue	4
Lodi Road	5
Louis Court	4
Louis Street	4
Maple Avenue	4
Michael Street	1
Milano Court	4
Millo Court	3
Moonachie Road	3
N Taylor Avenue	3
N Veprek Lane	3
Park Street	3
Phillips Avenue	2,3,4
Romanelli Avenue	1
Rossi Court	3
Ruta Court	4
Saddle River Avenue	5

Street Name	Sheet Number(s)
Schriever Street	1
Sievers Lane	3
South Main Street	2
Taylor Avenue	3
Terminal Lane	6
Tuve Lane	3
Veprek Lane	4
Vreeland Avenue	2,3
Wesley Street	1,2
West Street	1
Williams Avenue	3
Wilson Street	1
Worth Street	1

Tax Block by Sheet

Block Number	Sheet Number(s)
1.01	4
1.02	4
1.03	4
1.04	4
1.05	4
2.01	4
2.02	4
3	4
4	4
5.01	4
5.02	4
6	4
7.01	3
7.02	3
7.03	3
7.04	3
7.05	3
7.06	3
7.07	3
8	3
9	3
10	3
11	3
12	3

Block Number	Sheet Number(s)
13.01	3
13.02	3
13.03	3
13.04	3
13.05	3
13.06	2
13.07	3
13.08	3
14	3
15	3
16	3
17	3
18	3
19	2
20.01	2
20.02	2
20.03	2
21.01	2
21.02	2
21.03	2
22	2
23.01	2
23.02	2
24	2

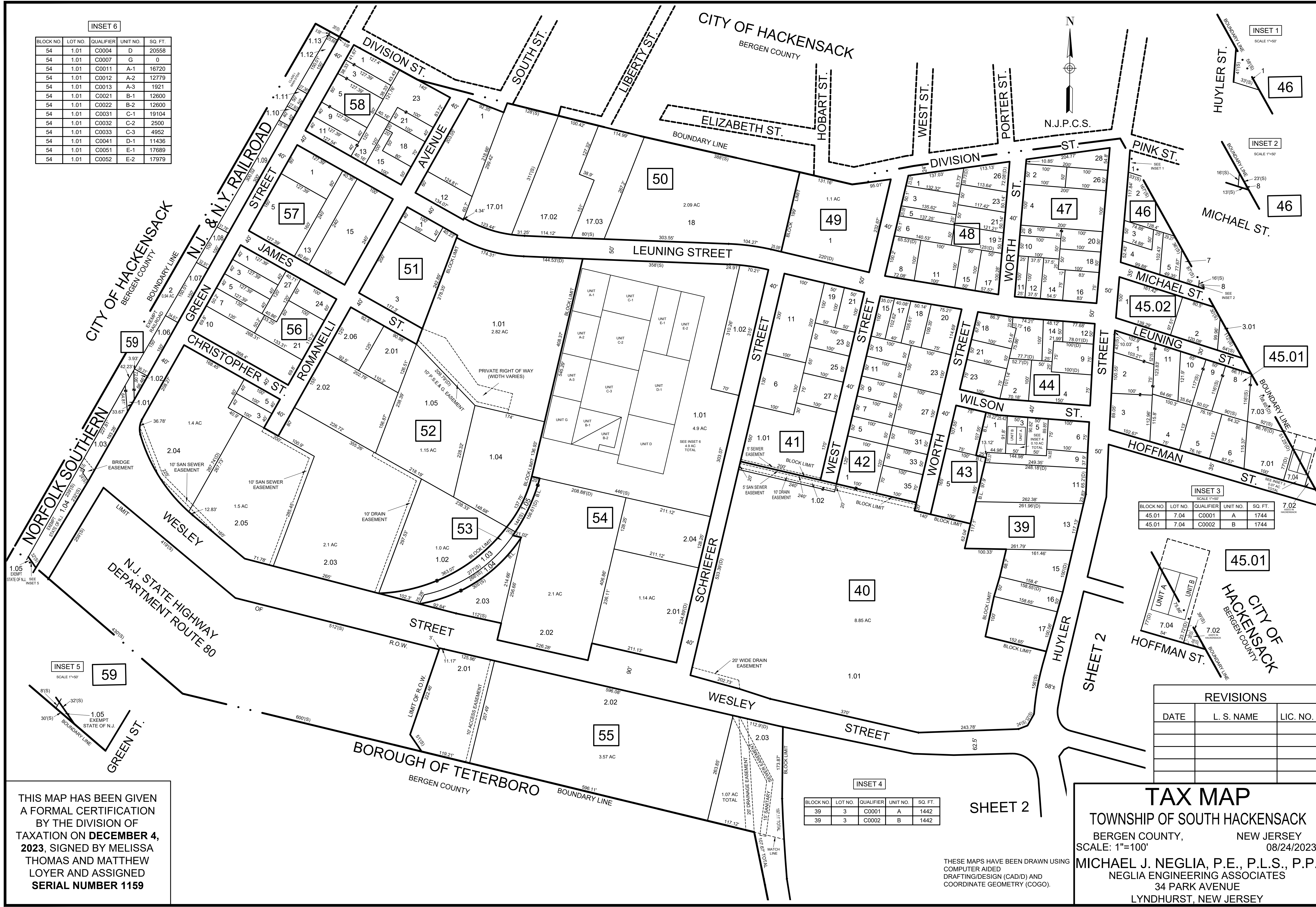
Block Number	Sheet Number(s)
25	2
29	2
32	2
33.01	2
33.02	2
37	2
38	2
39	1
40	1
41	1
42	1
43	1
44	1
45.01	1
45.02	1
46	1
47	1
48	1
49	1
50	1
51	1
52	1
53	1
54	1

Block Number	Sheet Number(s)
55	1,2
56	1
57	1
58	1
59	1
100	5
101	5
102	5
103	5
104	6
105	6
106	6,7

<p>THIS MAP HAS BEEN GIVEN A FORMAL CERTIFICATION BY THE DIVISION OF TAXATION ON DECEMBER 4, 2023, SIGNED BY MELISSA THOMAS AND MATTHEW LOYER AND ASSIGNED SERIAL NUMBER 1159</p>	<p>TAX MAP TOWNSHIP OF SOUTH HACKENSACK BERGEN COUNTY, NEW JERSEY SCALE: 1"=100' 08/24/2023 MICHAEL J. NEGLIA, P.E., P.L.S., P.P. NEGLIA ENGINEERING ASSOCIATES 34 PARK AVENUE LYNDHURST, NEW JERSEY</p>
---	---

INSET 6

BLOCK NO.	LOT NO.	QUALIFIER	UNIT NO.	SQ. FT.
54	1.01	C0004	D	20558
54	1.01	C0007	G	0
54	1.01	C0011	A-1	16720
54	1.01	C0012	A-2	12779
54	1.01	C0013	A-3	1921
54	1.01	C0021	B-1	12600
54	1.01	C0022	B-2	12600
54	1.01	C0031	C-1	19104
54	1.01	C0032	C-2	2500
54	1.01	C0033	C-3	4952
54	1.01	C0041	D-1	11436
54	1.01	C0051	E-1	17689
54	1.01	C0052	E-2	17979



INSET 5

BLOCK NO.	LOT NO.	QUALIFIER	UNIT NO.	SQ. FT.
59	1.05	EXEMPT	STATE OF N.J.	

THIS MAP HAS BEEN GIVEN A FORMAL CERTIFICATION BY THE DIVISION OF TAXATION ON **DECEMBER 4, 2023**, SIGNED BY MELISSA THOMAS AND MATTHEW LOYER AND ASSIGNED SERIAL NUMBER 1159

INSET 3

BLOCK NO.	LOT NO.	QUALIFIER	UNIT NO.	SQ. FT.
45.01	7.04	C0001	A	1744
45.01	7.04	C0002	B	1744

REVISIONS

DATE	L. S. NAME	LIC. NO.

INSET 4

BLOCK NO.	LOT NO.	QUALIFIER	UNIT NO.	SQ. FT.
39	3	C0001	A	1442
39	3	C0002	B	1442

TAX MAP
 TOWNSHIP OF SOUTH HACKENSACK
 BERGEN COUNTY, NEW JERSEY
 SCALE: 1"=100' 08/24/2023
 MICHAEL J. NEGLIA, P.E., P.L.S., P.P.
 NEGLIA ENGINEERING ASSOCIATES
 34 PARK AVENUE
 LYNDHURST, NEW JERSEY

THESE MAPS HAVE BEEN DRAWN USING COMPUTER AIDED DRAFTING/DESIGN (CAD/D) AND COORDINATE GEOMETRY (COGO).

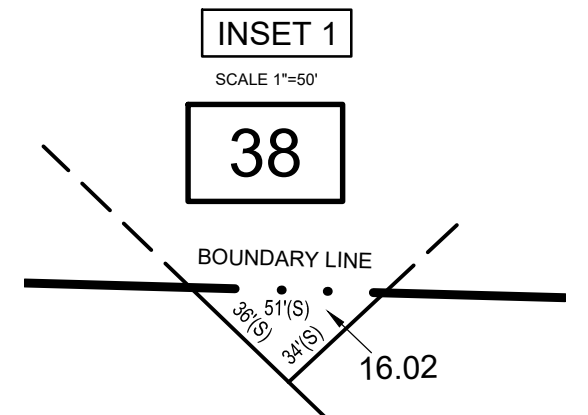
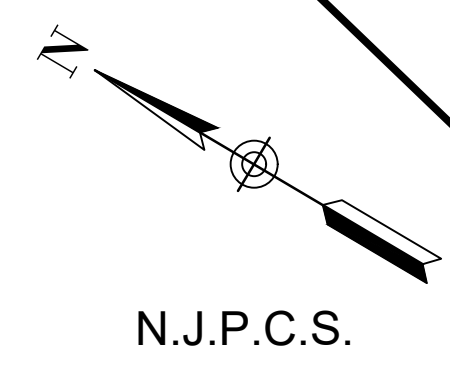
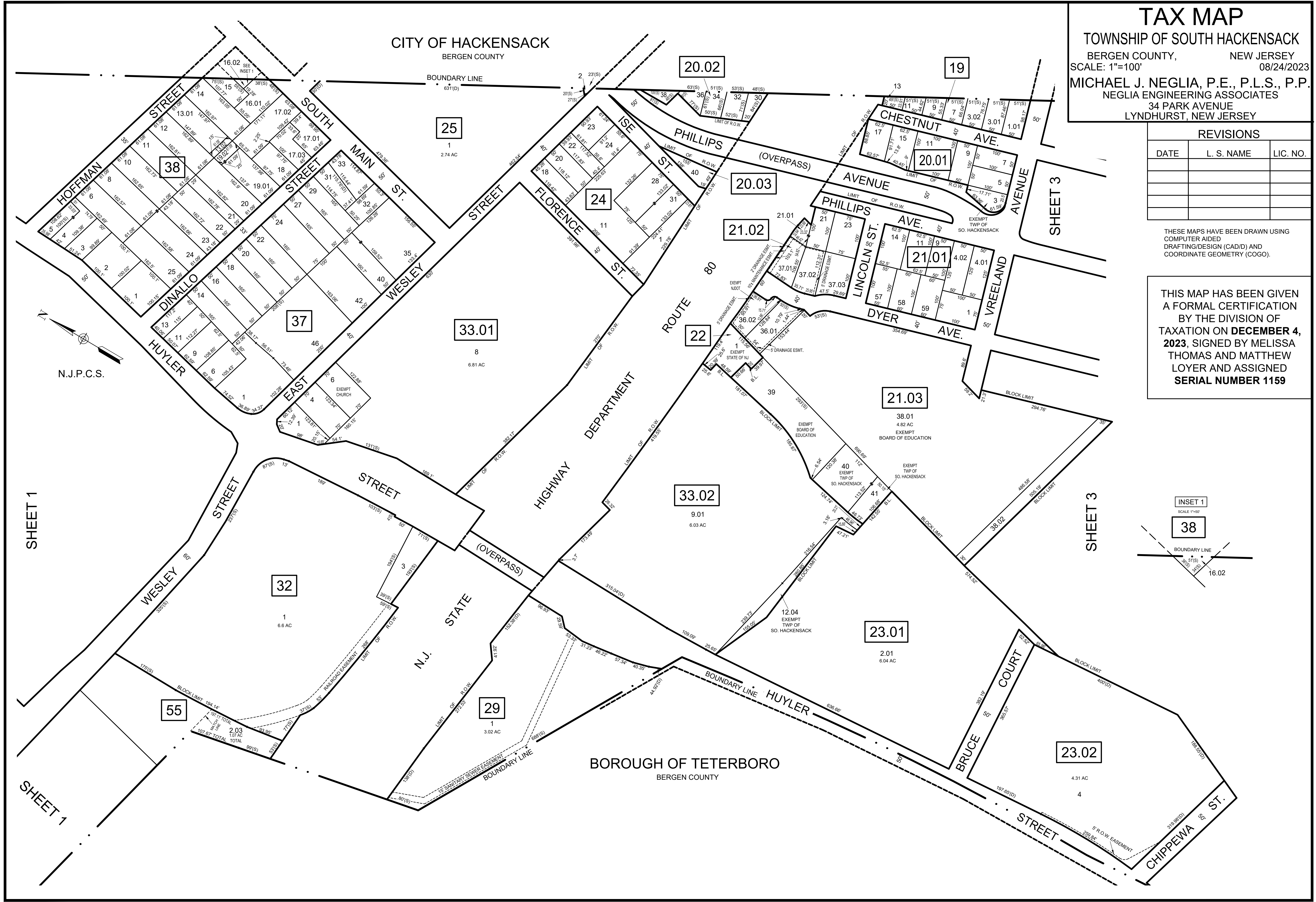
SHEET 2

TAX MAP
 TOWNSHIP OF SOUTH HACKENSACK
 BERGEN COUNTY, NEW JERSEY
 SCALE: 1"=100' 08/24/2023
MICHAEL J. NEGLIA, P.E., P.L.S., P.P.
 NEGLIA ENGINEERING ASSOCIATES
 34 PARK AVENUE
 LYNTHURST, NEW JERSEY

REVISIONS		
DATE	L. S. NAME	LIC. NO.

THESE MAPS HAVE BEEN DRAWN USING
 COMPUTER AIDED
 DRAFTING/DESIGN (CAD/D) AND
 COORDINATE GEOMETRY (COGO).

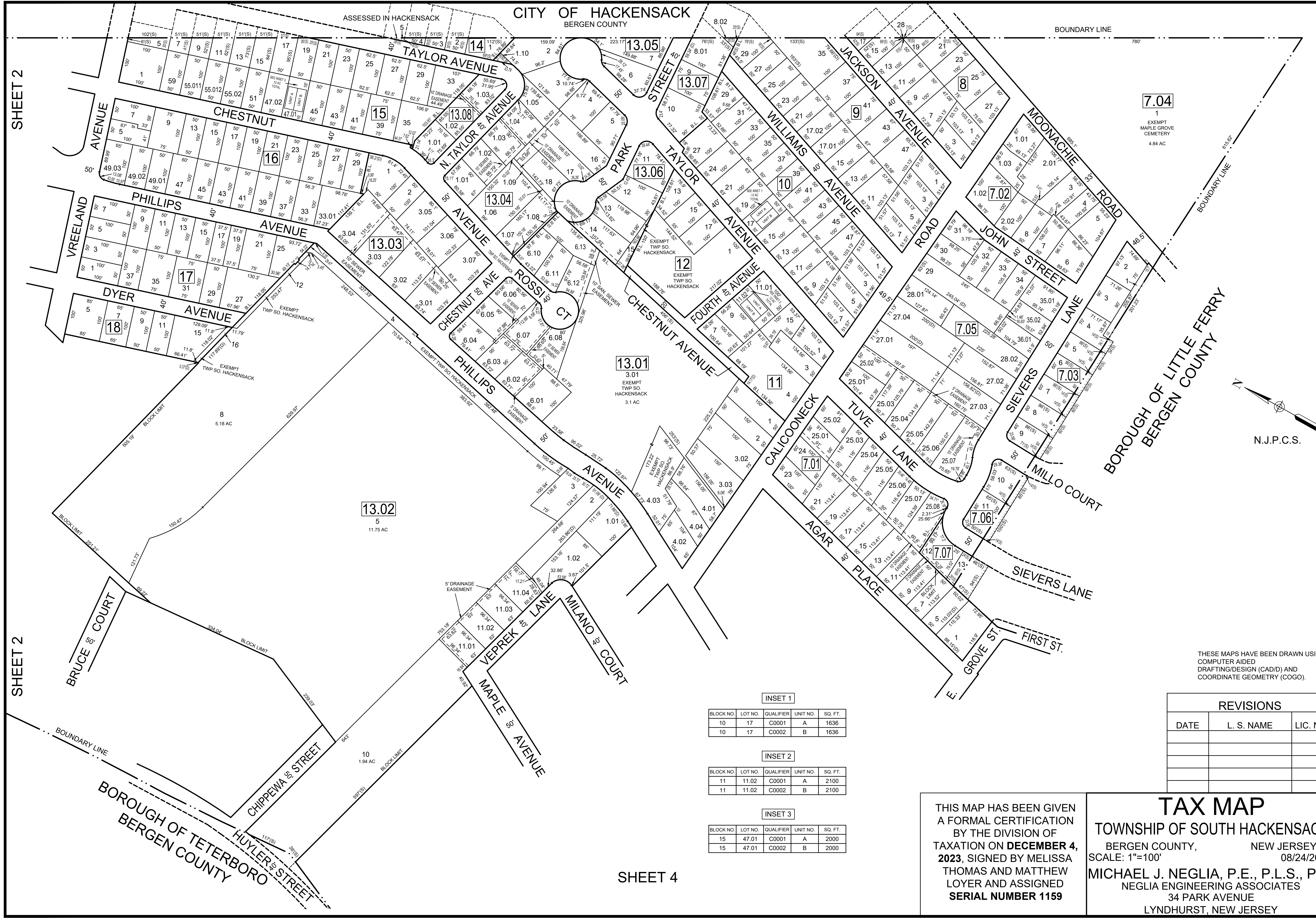
THIS MAP HAS BEEN GIVEN
 A FORMAL CERTIFICATION
 BY THE DIVISION OF
 TAXATION ON **DECEMBER 4,**
2023, SIGNED BY MELISSA
 THOMAS AND MATTHEW
 LOYER AND ASSIGNED
SERIAL NUMBER 1159



SHEET 1

SHEET 3

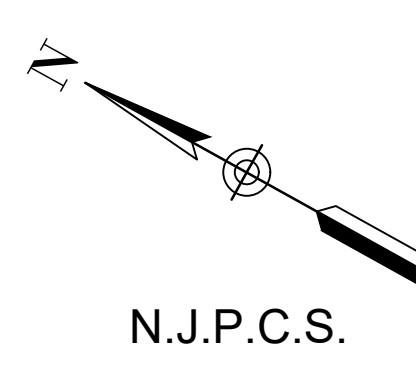
SHEET 1



SHEET 2

SHEET 2

SHEET 4



THESE MAPS HAVE BEEN DRAWN USING
COMPUTER AIDED
DRAFTING/DESIGN (CAD/D) AND
COORDINATE GEOMETRY (COGO).

INSET 1

BLOCK NO.	LOT NO.	QUALIFIER	UNIT NO.	SQ. FT.
10	17	C0001	A	1636
10	17	C0002	B	1636

INSET 2

BLOCK NO.	LOT NO.	QUALIFIER	UNIT NO.	SQ. FT.
11	11.02	C0001	A	2100
11	11.02	C0002	B	2100

INSET 3

BLOCK NO.	LOT NO.	QUALIFIER	UNIT NO.	SQ. FT.
15	47.01	C0001	A	2000
15	47.01	C0002	B	2000

REVISIONS

DATE	L. S. NAME	LIC. NO.

THIS MAP HAS BEEN GIVEN
A FORMAL CERTIFICATION
BY THE DIVISION OF
TAXATION ON **DECEMBER 4,**
2023, SIGNED BY MELISSA
THOMAS AND MATTHEW
LOYER AND ASSIGNED
SERIAL NUMBER 1159

TAX MAP
TOWNSHIP OF SOUTH HACKENSACK
BERGEN COUNTY, NEW JERSEY
SCALE: 1"=100'
08/24/2023
MICHAEL J. NEGLIA, P.E., P.L.S., P.P.
NEGLIA ENGINEERING ASSOCIATES
34 PARK AVENUE
LYNDHURST, NEW JERSEY

REVISIONS		
DATE	L. S. NAME	LIC. NO.

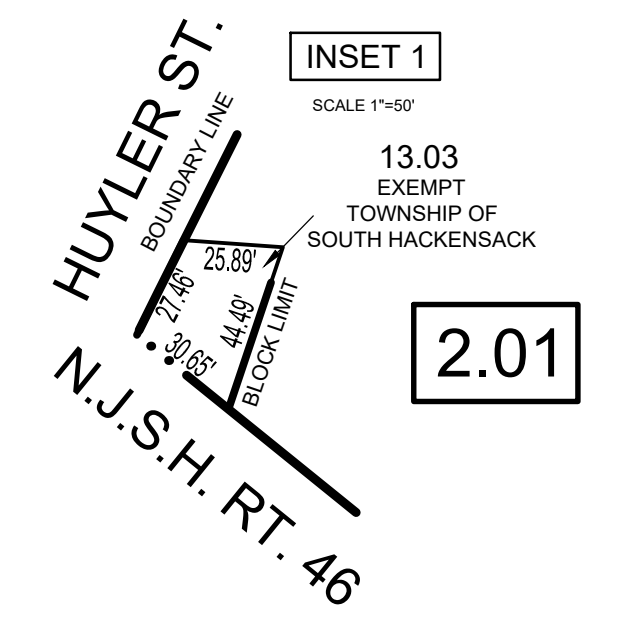
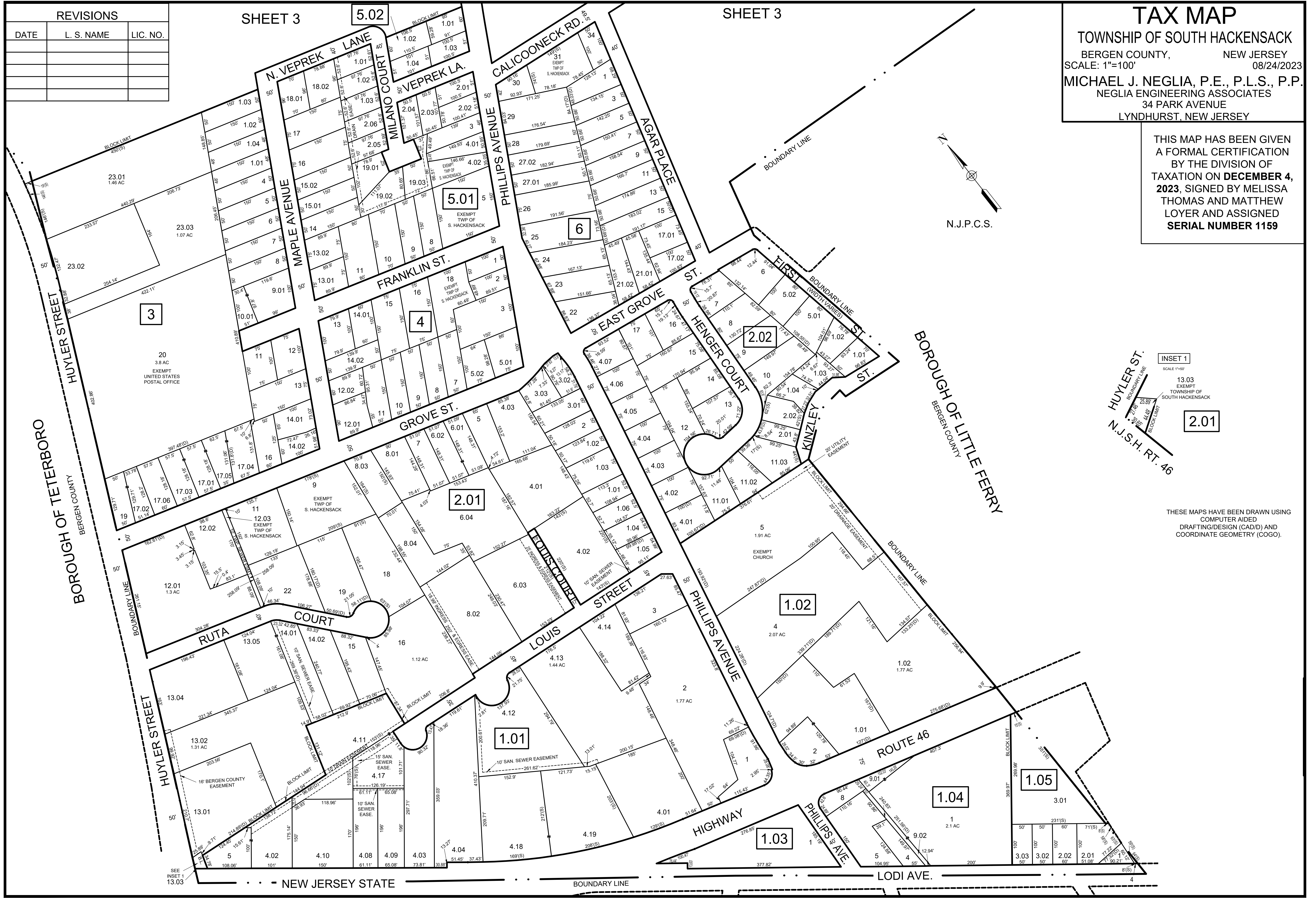
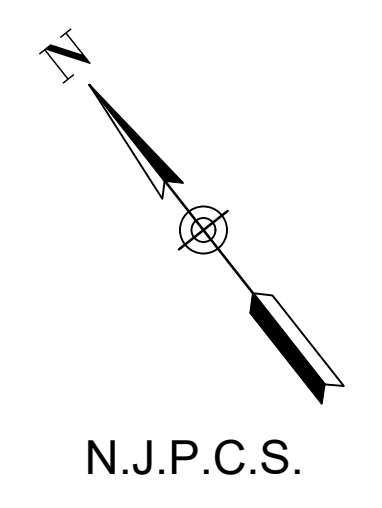
SHEET 3

5.02

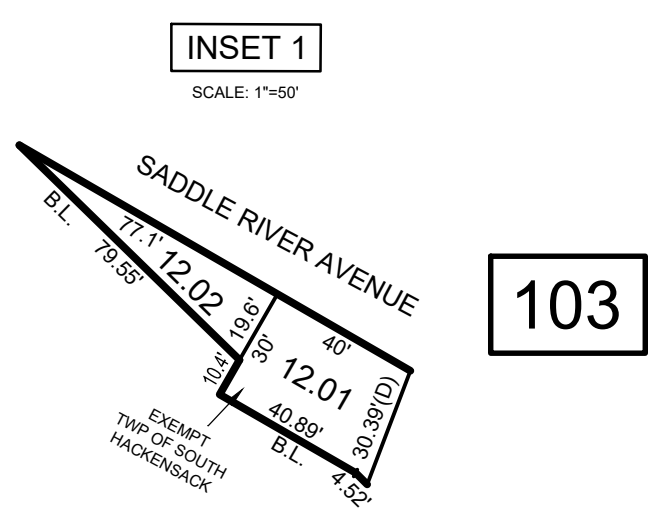
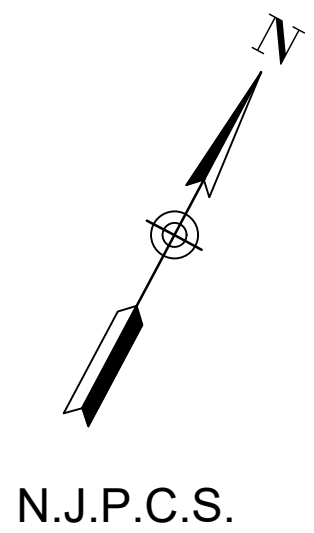
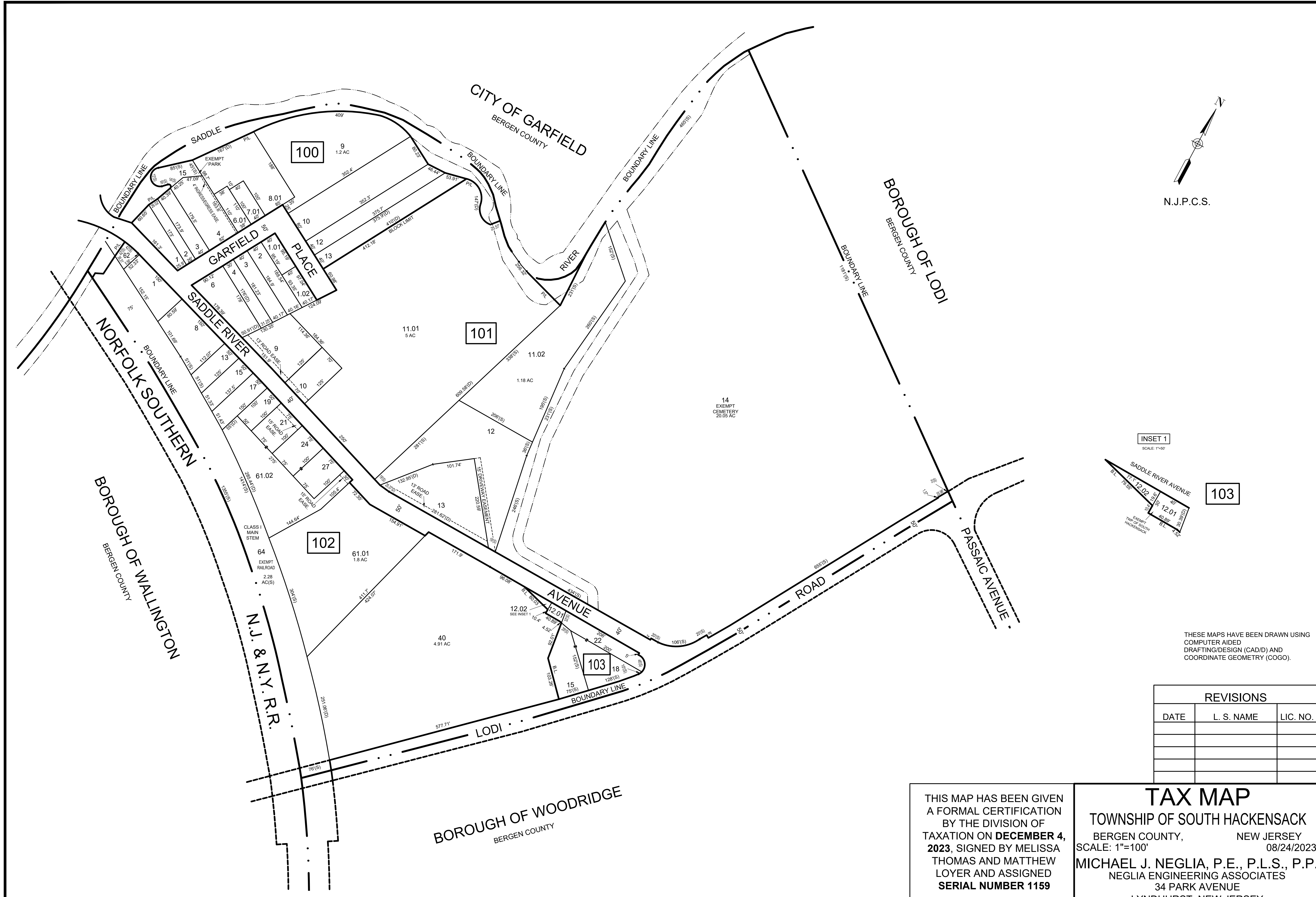
SHEET 3

TAX MAP
 TOWNSHIP OF SOUTH HACKENSACK
 BERGEN COUNTY, NEW JERSEY
 SCALE: 1"=100' 08/24/2023
 MICHAEL J. NEGLIA, P.E., P.L.S., P.P.
 NEGLIA ENGINEERING ASSOCIATES
 34 PARK AVENUE
 LYNDHURST, NEW JERSEY

THIS MAP HAS BEEN GIVEN A FORMAL CERTIFICATION BY THE DIVISION OF TAXATION ON **DECEMBER 4, 2023**, SIGNED BY MELISSA THOMAS AND MATTHEW LOYER AND ASSIGNED **SERIAL NUMBER 1159**



THESE MAPS HAVE BEEN DRAWN USING COMPUTER AIDED DRAFTING/DESIGN (CAD/D) AND COORDINATE GEOMETRY (COGO).

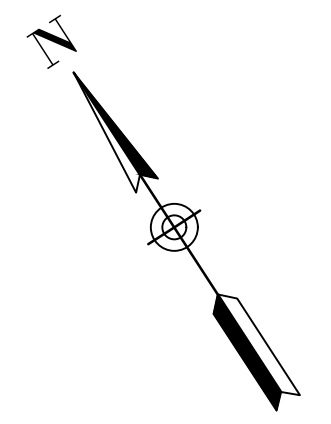


THESE MAPS HAVE BEEN DRAWN USING COMPUTER AIDED DRAFTING/DESIGN (CAD/D) AND COORDINATE GEOMETRY (COGO).

REVISIONS		
DATE	L. S. NAME	LIC. NO.

THIS MAP HAS BEEN GIVEN A FORMAL CERTIFICATION BY THE DIVISION OF TAXATION ON **DECEMBER 4, 2023**, SIGNED BY MELISSA THOMAS AND MATTHEW LOYER AND ASSIGNED **SERIAL NUMBER 1159**

TAX MAP
 TOWNSHIP OF SOUTH HACKENSACK
 BERGEN COUNTY, NEW JERSEY
 SCALE: 1"=100' 08/24/2023
MICHAEL J. NEGLIA, P.E., P.L.S., P.P.
 NEGLIA ENGINEERING ASSOCIATES
 34 PARK AVENUE
 LYNDHURST, NEW JERSEY



N.J.P.C.S.

BOROUGH OF MOONACHIE
BERGEN COUNTY

EMPIRE BOULEVARD

MOONACHIE ROAD

WASHINGTON AVE.

TERMINAL LANE

106

105

104

SHEET 7

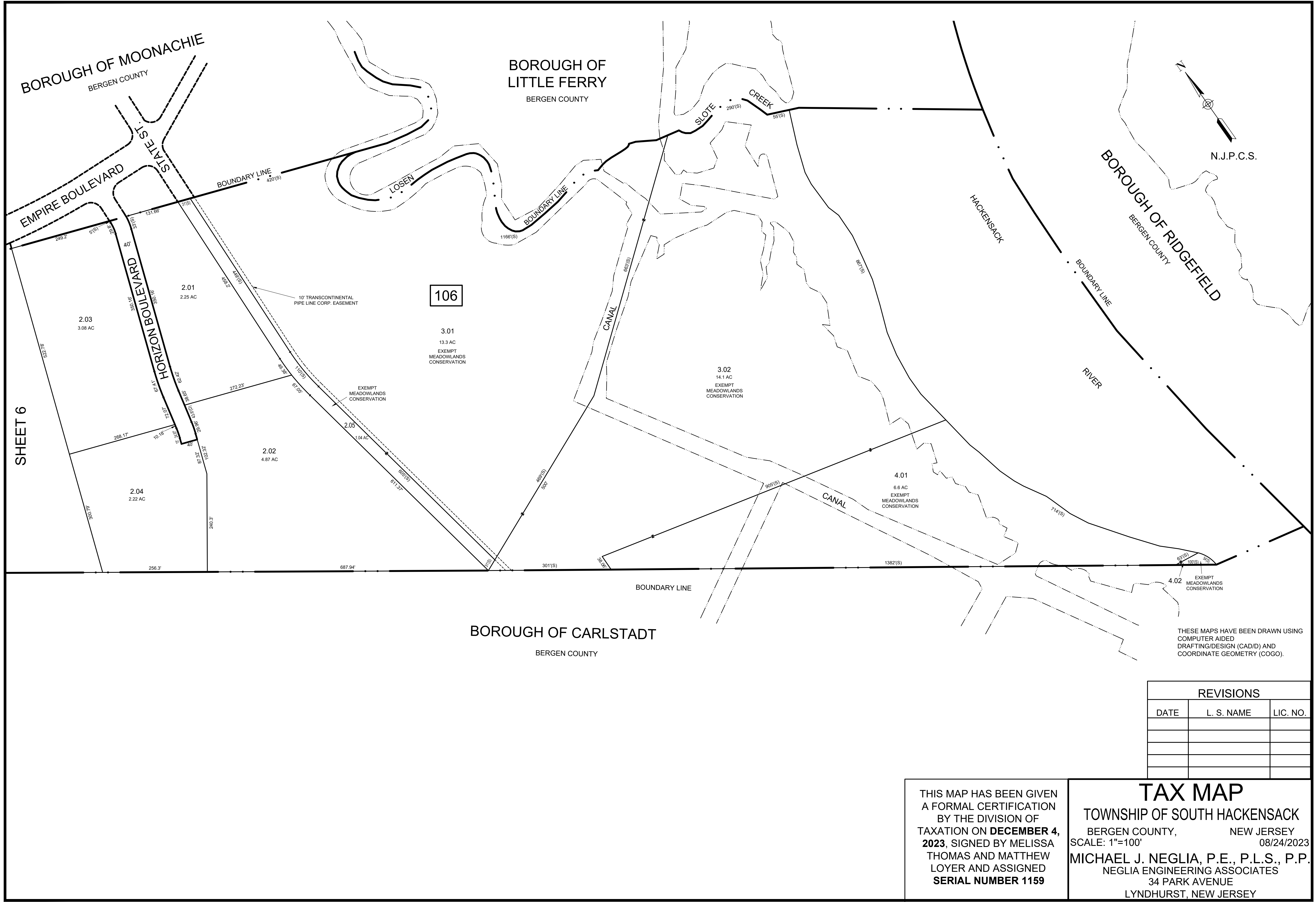
THESE MAPS HAVE BEEN DRAWN USING
COMPUTER AIDED
DRAFTING/DESIGN (CAD/D) AND
COORDINATE GEOMETRY (COGO).

REVISIONS		
DATE	L. S. NAME	LIC. NO.

BOROUGH OF CARLSTADT
BERGEN COUNTY

THIS MAP HAS BEEN GIVEN
A FORMAL CERTIFICATION
BY THE DIVISION OF
TAXATION ON **DECEMBER 4,**
2023, SIGNED BY MELISSA
THOMAS AND MATTHEW
LOYER AND ASSIGNED
SERIAL NUMBER 1159

TAX MAP
TOWNSHIP OF SOUTH HACKENSACK
BERGEN COUNTY, NEW JERSEY
SCALE: 1"=100' 08/24/2023
MICHAEL J. NEGLIA, P.E., P.L.S., P.P.
NEGLIA ENGINEERING ASSOCIATES
34 PARK AVENUE
LYNDHURST, NEW JERSEY



106

THESE MAPS HAVE BEEN DRAWN USING COMPUTER AIDED DRAFTING/DESIGN (CAD/D) AND COORDINATE GEOMETRY (COGO).

REVISIONS		
DATE	L. S. NAME	LIC. NO.

THIS MAP HAS BEEN GIVEN A FORMAL CERTIFICATION BY THE DIVISION OF TAXATION ON **DECEMBER 4, 2023**, SIGNED BY MELISSA THOMAS AND MATTHEW LOYER AND ASSIGNED **SERIAL NUMBER 1159**

TAX MAP
 TOWNSHIP OF SOUTH HACKENSACK
 BERGEN COUNTY, NEW JERSEY
 SCALE: 1"=100' 08/24/2023
MICHAEL J. NEGLIA, P.E., P.L.S., P.P.
 NEGLIA ENGINEERING ASSOCIATES
 34 PARK AVENUE
 LYNDHURST, NEW JERSEY